



**Dear Top Notch customer:**

**We Know Service too!**

Excab Inc. is a customer driven, wholesale distributor of fire protection equipment and accessories. Our knowledgeable and courteous sales team, same day shipping, competitive pricing, and extensive inventory are a few of the reasons we've become the first choice in the fire protection industry.

As an affiliate of Top Notch Distributors, Inc., you can rest assured that dealing with Excab Inc. will be as easy as dealing with Top Notch Distributors, Inc.

Our sales team is very well trained in both product knowledge and customer service. This catalog shows our full line of product currently available, our inventory is continually evolving to meet the demands of our customer, if you don't see what you need please call us and let us know, we may have added new items to stock.

We look forward to serving all of your fire and safety equipment needs.

Thank You,



Dennis C. Gavin

The following guidelines should be used when fire extinguisher cabinets, fire hose/valve cabinets, and other fire protection cabinets are located in public accommodations and commercial facilities subject to Title III of the Americans with Disabilities Act (ADA):

## WALL PROJECTIONS

ADA Accessibility Guidelines (ADAAG) specify that objects projecting from walls with their leading edges between 27" and 80" above the finished floor shall protrude no more than 4" into walks, corridors, passageways, or aisles. Objects mounted with their leading edges at or below 27" may protrude any amount.

Most **semi-recessed** fire protection cabinets have 2½" return trims which comply with ADAAG. However, certain limited wall depths may require the specifier to consider return trims which project 4". If this occurs in a location subject to ADAAG and the cabinet must be mounted with its leading edge 27" above the finished floor, the 4" projecting trim must be specified with Larsen's recessed handle. Semi-recessed cabinets with 4½" return trims do not comply with ADAAG, unless they can be mounted with their leading edges at or below 27" above the finished floor.

Larsen's **surface-mounted** cabinets project more than 4" from the wall. To comply with ADAAG, these units must be mounted with their leading edges at or below 27" from the finished floor. If this is not possible, these units may have to be changed to recessed or semi-recessed cabinets which do comply with ADAAG or relocated in areas not subject to ADAAG.

Larsen's recessed and trimless **"bubble" cabinets (Cameo and Vista Series)** project no more than 4" from the finished wall and comply with ADAAG. Larsen's semi-recessed and surface-mounted Cameo and Vista cabinets project more than 4" from the wall, and compliance with ADAAG depends on location and installation issues discussed in the above paragraph.

## MOUNTING HEIGHTS

ADA Guidelines specify reach ranges for building occupants who require access to equipment such as fire extinguishers and other fire safety devices.

For an unobstructed approach, the maximum forward reach to this equipment (for example, the fire extinguisher handle) is 48" above the floor. The maximum side reach for such an approach is 54". The actual mounting heights for cabinets housing this equipment can be determined by reviewing the exact dimensions of the specified cabinet and the positioning of the fire equipment within that cabinet. Please note that these ADAAG reach range requirements fall within NFPA (National Fire Protection Association) guidelines. The NFPA guidelines state that the distance from the floor to the top of the fire extinguisher be no more than 5 feet.

## SIGNAGE AND OPERATING MECHANISMS

At the present time, raised and brailled characters or other special ADA signage are not required for fire protection cabinets. In addition, the controls, handles, and other operating mechanisms for fire protection cabinet doors presently are not covered by ADA Accessibility Guidelines for hardware.

Please note that many ADA Guidelines for fire protection cabinets are not clearly defined and may be subject to change through the court system or other mediation methods. It is important to contact Larsen's for the most current information.

# Fire-Rated Cabinets Flame-Shield Option

## GENERAL DESCRIPTION:

The **Flame-Shield** option is available for a variety of Larsen's fire extinguisher, fire department valve, fire hose, and fire blanket cabinets. It is designed specifically to maintain the integrity of one and two hour fire walls with all Larsen's recessed and semi-recessed cabinets. Warnock-Hersey has certified and listed Larsen's **Flame-Shield** option for one and two hour combustible and non-combustible wall systems to meet the requirements of UBC Standard 43-6 (ASTME-814). Larsen's **Flame-Shield** option assures the specifier that life safety codes will be maintained and by eliminating the need to continue the fire wall within the rough opening, saves the installer considerable time and expense. Larsen's **Flame-Shield** option is appropriate for either new construction or renovation projects.

## BOX SPECIFICATION:

All boxes for Larsen's fire extinguisher, fire department valve, fire hose, and fire blanket cabinets having the **Flame-Shield** option are constructed of cold-rolled steel with baked acrylic enamel finish. The space between the double walls is lined entirely with  $\frac{5}{8}$ " thick fire barrier material.

## DOOR AND TRIM SPECIFICATION:

All of Larsen's door styles are available with the **FLAME-SHIELD** option.

All of Larsen's door and trim materials are available with the **FLAME-SHIELD** option:

### 1. Steel:

One piece, cold-rolled with a standard finish of white baked acrylic enamel.

### 2. Aluminum:

Extruded or fabricated construction with a standard clear satin anodized finish. A wide selection of optional color anodized finishes is available.

### 3. Stainless Steel:

One piece, 304 stainless steel with a standard #4 brushed finish or optional #8 polished finish.

### 4. Solid Brass or Solid Bronze:

One piece with a standard #4 satin or optional #8 polished finish. All doors and trims have a clear protective coating.

## MORE OPTIONS:

**Die-Cut Lettering** – Larsen's thermal die cut lettering is the state of the art for precise cabinet identification and has replaced silk screen lettering as the industry standard. The appearance of these pre-spaced, computer manufactured, pressure sensitive vinyl letters is superior to that of silk screened letters. Die cut letters contribute to a healthier environment because, unlike the silk screening process, the factory application of die cut letters does not generate any hazardous waste. Die cut letters offer the additional performance advantage of easy replacement, should they ever become damaged after installation. Larsen's die cut letters are available in the standard colors of red, black, or white and the standard designs of vertical, horizontal, or type A - for both direct and indirect application. Custom lettering, special colors, and pictorial graphics are also available, if specified.

**Vigilante Alarm** – Larsen's exclusive Vigilante Alarm provides additional protection for a cabinet's life safety contents. The Vigilante can reduce theft losses, help to prolong extinguisher life, and safe guard fire department valves, fire hose, and other equipment. It is constructed of high impact plastic, is plunger activated and includes a heavy-duty 9 volt battery as standard equipment. The on/off jack provides for convenient servicing of the cabinet's contents by authorized personnel.

**Fire Handle** – Larsen's die cast "FIRE" handle is an attractive identification alternative to a decal or other lettering. The raised letters are flush with the face of the handle, and the size makes it inter changeable with Larsen's standard pull handle.

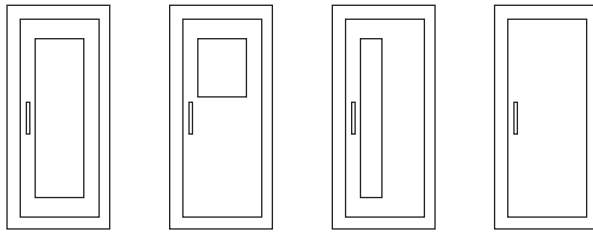
**Recessed Handle** – Larsen's zinc alloy, recessed handle is available with Solid, H-Duo, V-Duo, or Gemini Doors. This recessed handle must be specified with 4" projecting cabinet trims in order for the cabinet to comply with ADA wall projection guidelines.

# Architectural Series Fire Extinguisher Cabinets Specifications

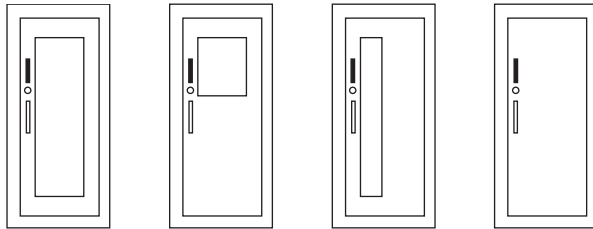
All recessed and semi-recessed cabinets and surface-mounted steel cabinets have a heavy gauge, white baked enamel box. Surface-mounted cabinets with aluminum door and trim have a box constructed entirely of clear or color anodized aluminum. Surface-mounted cabinets with stainless steel door and trim have a box constructed entirely of 304 stainless steel with a #4 finish.

Steel and stainless steel cabinets have a full 1/2" thick hollow metal heavy gauge door. Trims and doors feature one piece construction with satin finish pull handle, continuous matching hinge, and self-adjusting roller catch. Baked white enamel finish is standard for steel units. Stainless steel cabinets have a #4 finish, 304 stainless steel.

Aluminum cabinet doors and trims are extruded or fabricated aluminum with clear satin anodized finish. Aluminum door is 1/2" thick with satin finish matching pull handle and hinge. Color anodized finishes are available as options.

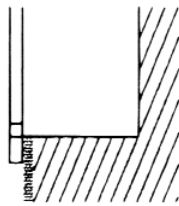


**Full Glass      Horizontal Duo      Vertical Duo      Solid**

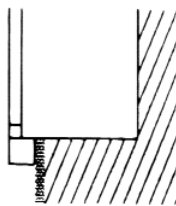


**Full Glass with Larsen-Lok      Horizontal Duo with Larsen-Lok      Vertical Duo with Larsen-Lok      Solid with Larsen-Lok**

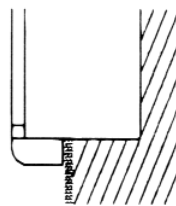
**\* Note:** Solid Door with Larsen-Lok can be specified as Institutional Door (access only with key) by deleting the pull handle and decal.



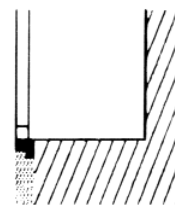
**5/16" Flat Trim Fully Recessed**



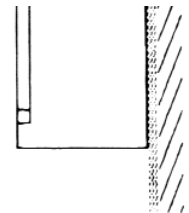
**1 1/4" 1 1/2" Square Trim Semi-Recessed**



**2 1/2" 3 1/2" 4" 4 1/2" Rolled Edge Semi-Recessed**



**3/4" Plaster Stop Trimless \***



**Surface Mounted**

\* Trimless cabinets must be installed before the drywall because their plaster stops must be behind the drywall.

Trimless cabinets are not recommended for block wall installation.

## Architectural Series Fire Extinguisher Cabinets

Larsen's Architectural Series is a traditional, value-added line of recessed, semi-recessed, and surface-mounted fire extinguisher cabinets. These units are designed for all types of buildings and are equipped with the conventional door styles. The standard door and trim material is steel, and optional materials include both aluminum and stainless steel. All doors are 1/2" thick and open 180 degrees. All have a satin-finish pull handle with a self-adjusting roller catch; and a continuous piano hinge constructed of material which matches the door and trim.



Model Number	Trim Style and Projection	Inside Box Dimensions H x W x D	Outside Trim Dimensions H x W **	Rough Opening H x W x D	Recommended Extinguisher Capacity	
	2409-R1	Rec. - 5/16	24 x 9 1/2 x 5*	27 1/2 x 13	25 x 10 1/2 x 5 1/4	MP2 1/2, MP5, MP5-A, DC2 1/2, HT2 1/2, HT5
FS	2409-R1	Rec. - 5/16	24 x 9 1/2 x 5*	27 1/2 x 13	26 1/8 x 11 5/8 x 6 1/8	
	2409-5R	Semi - Rec. 1 1/2	24 x 9 1/2 x 5*	27 1/2 x 13	25 x 10 1/2 x 4	
FS	2409-5R	Semi - Rec. 1 1/2	24 x 9 1/2 x 5*	27 1/2 x 13	26 1/8 x 11 5/8 x 4 7/8	
	2409-R3	Semi - Rec. 2 1/2	24 x 9 1/2 x 5*	27 1/2 x 13	25 x 10 1/2 x 3	
FS	2409-R3	Semi - Rec. 2 1/2	24 x 9 1/2 x 5*	27 1/2 x 13	26 1/8 x 11 5/8 x 3 3/4	
	2409-R2	Rec. - 5/16	24 x 9 1/2 x 6	27 1/2 x 13	25 x 10 1/2 x 6 1/4	MP2 1/2, MP5, MP5-A, DC2 1/2, DC5, MP6, MP10, DC6, DC10, CD5, HT2 1/2, HT5
FS	2409-R2	Rec. - 5/16	24 x 9 1/2 x 6	27 1/2 x 13	26 1/8 x 11 5/8 x 7 1/8	
	2409-R4	Semi - Rec. 3 1/2	24 x 9 1/2 x 6	27 1/2 x 13	25 x 10 1/2 x 3	
FS	2409-R4	Semi - Rec. 3 1/2	24 x 9 1/2 x 6	27 1/2 x 13	26 1/8 x 11 5/8 x 4	
	2409-R7	Semi - Rec. 1 1/2	24 x 9 1/2 x 6	27 1/2 x 13	25 x 10 1/2 x 5	
FS	2409-R7	Semi - Rec. 1 1/2	24 x 9 1/2 x 6	27 1/2 x 13	26 1/8 x 11 5/8 x 5 7/8	
	2409-6R	Semi - Rec. 2 1/2	24 x 9 1/2 x 6	27 1/2 x 13	25 x 10 1/2 x 4	
FS	2409-6R	Semi - Rec. 2 1/2	24 x 9 1/2 x 6	27 1/2 x 13	26 1/8 x 11 5/8 x 4 7/8	
	2409-RM	Semi - Rec. 4 1/2	24 x 9 1/2 x 6	27 1/2 x 13	25 x 10 1/2 x 2	
FS	2409-RM	Semi - Rec. 4 1/2	24 x 9 1/2 x 6	27 1/2 x 13	26 1/8 x 11 5/8 x 2 7/8	
	2409-RA	Semi - Rec. 4	24 x 9 1/2 x 6	27 1/2 x 13	25 x 10 1/2 x 2 1/2	
FS	2409-RA	Semi - Rec. 4	24 x 9 1/2 x 6	27 1/2 x 13	26 1/8 x 11 5/8 x 3 3/8	
	2409-SM	Surface Mtd.	27 1/2 x 13 x 6	27 1/2 x 13		

# Architectural Series Fire Extinguisher Cabinets



Model Number	Trim Style and Projection	Inside Box Dimensions H x W x D	Outside Trim Dimensions H x W **	Rough Opening H x W x D	Recommended Extinguisher Capacity
2712-R	Rec. - 5/16	27 x 12 x 8	30 1/2 x 15 1/2	28 x 13 x 8 1/4	PW2 1/2, MP20, DC20, CD10, WC-6L, HT11, HT15 1/2
2712-RK	Semi - Rec. 1 1/4	27 x 12 x 8	30 1/2 x 15 1/2	28 x 13 x 7 1/4	
2712-RL	Semi - Rec. 2 1/2	27 x 12 x 8	30 1/2 x 15 1/2	28 x 13 x 6	
2712-RM	Semi - Rec. 4 1/2	27 x 12 x 8	30 1/2 x 15 1/2	28 x 13 x 4	
2712-RA	Semi - Rec. 4	27 x 12 x 8	30 1/2 x 15 1/2	28 x 13 x 4 1/2	
2712-SM	Surface Mtd.	27 x 12 x 8	30 1/2 x 15 1/2		

\* Inside box depth is 4 3/4" when supplied with aluminum door and trim. The AL2409-5R has a 1 1/4" square trim.

\*\* Deduct 3/4" from H x W dimensions for cabinets with aluminum door and trim. This does not apply to "FS" fire-rated option.

**Note:** All recessed, trimless, and semi-recessed cabinets with 2 1/2" projecting trims or less comply with ADA wall projection guidelines. If semi-recessed cabinets with 4" projecting trims cannot be mounted with their leading edges at or below 27" above the finished floor, they must be specified with Larsen's recessed handle to comply with ADA wall projection guidelines. Semi-recessed cabinets with 4 1/2" return trims and all surface-mounted cabinets do not comply with ADA wall projection guidelines, unless they can be mounted with their leading edges at or below 27" above the finished floor.

## Medallion Series Fire Extinguisher Cabinets

Larsen's Medallion Series is an extensive line of recessed and semi-recessed cabinets with distinctive solid brass doors and trims. A #4 satin finish is standard, and other polished finishes are available, if specified. This custom series is intended for use in museums, performing arts centers, historical buildings, government and financial institutions, and other special buildings where the elegance of solid brass will complement the overall design. The Medallion Series would be appropriate for either new construction or renovation projects.

As an option, solid bronze doors and trims also are available. Muntz Metal also is available. Please contact factory for additional information.



Model Number	Trim Style and Projection	Inside Box Dimensions H x W x D	Outside Trim Dimensions H x W	Rough Opening H x W x D	Recommended Extinguisher Capacity
B2409-5R	Semi - Rec. - 1 <sup>1</sup> / <sub>2</sub>	24 x 9 <sup>1</sup> / <sub>2</sub> x 5	27 <sup>1</sup> / <sub>2</sub> x 13	25 x 10 <sup>1</sup> / <sub>2</sub> x 4	MP2 <sup>1</sup> / <sub>2</sub> , MP5, MP5-A, DC2 <sup>1</sup> / <sub>2</sub> , DC5, HT2 <sup>1</sup> / <sub>2</sub> , HT5
B2409-6R	Semi - Rec. 2 <sup>1</sup> / <sub>2</sub>	24 x 9 <sup>1</sup> / <sub>2</sub> x 6	27 <sup>1</sup> / <sub>2</sub> x 13	25 x 10 <sup>1</sup> / <sub>2</sub> x 4	MP2 <sup>1</sup> / <sub>2</sub> , MP5, MP5-A, DC2 <sup>1</sup> / <sub>2</sub> , DC5, MP6, MP10, DC6, DC10, CD5, HT2 <sup>1</sup> / <sub>2</sub> , HT5

**Note:** Solid brass or solid bronze doors and trims are available for the Cameo Series, the Occult Series, as well as other Larsen's Fire Extinguisher, Valve and Hose Cabinets. Please contact factory for additional information.

**Note:** All Medallion Series cabinets with 3<sup>1</sup>/<sub>2</sub>" projecting trims or less comply with ADA wall projection guidelines.

## Gemini Series Fire Extinguisher Cabinets

Larsen's Gemini Series is an aesthetically designed cabinet line which is identified by an extensive selection of frameless acrylic doors. Gemini cabinets are identical to the Architectural Series, except these units have a frameless door of smooth or textured acrylic in lieu of the conventional hollow-metal door frame. The Gemini Series is specified by using the prefix "G" as part of the model number.



Model Number	Trim Style and Projection	Inside Box Dimensions H x W x D	Outside Trim Dimensions H x W **	Rough Opening H x W x D	Recommended Extinguisher Capacity	
G2409-R1	Rec. - 5/16	24 x 9 1/2 x 5*	27 1/2 x 13	25 x 10 1/2 x 5 1/4	MP2 1/2, MP5, MP5-A, DC2 1/2, DC5, HT2 1/2, HT5	
FS G2409-R1	Rec. - 5/16	24 x 9 1/2 x 5*	27 1/2 x 13	26 1/8 x 11 5/8 x 6 1/8		
G2409-5R	Semi-Rec. 1 1/2	24 x 9 1/2 x 5*	27 1/2 x 13	25 x 10 1/2 x 4		
FS G2409-5R	Semi-Rec. 1 1/2	24 x 9 1/2 x 5*	27 1/2 x 13	26 1/8 x 11 5/8 x 4 7/8		
G2409-R3	Semi-Rec. 2 1/2	24 x 9 1/2 x 5*	27 1/2 x 13	25 x 10 1/2 x 3		
FS G2409-R3	Semi-Rec. 2 1/2	24 x 9 1/2 x 5*	27 1/2 x 13	26 1/8 x 11 5/8 x 3 3/4		
G2409-R2	Rec. 5/16	24 x 9 1/2 x 6	27 1/2 x 13	25 x 10 1/2 x 6 1/4		MP2 1/2, MP5, MP5-A, DC2 1/2, DC5, MP6, MP10, DC6, DC10, CD5, HT2 1/2, HT5
FS G2409-R2	Rec. 5/16	24 x 9 1/2 x 6	27 1/2 x 13	26 1/8 x 11 5/8 x 7 1/8		
G2409-R4	Semi-Rec. 3 1/2	24 x 9 1/2 x 6	27 1/2 x 13	25 x 10 1/2 x 3		
FS G2409-R4	Semi-Rec. 3 1/2	24 x 9 1/2 x 6	27 1/2 x 13	26 1/8 x 11 5/8 x 4		
G2409-R7	Semi-Rec. 1 1/2	24 x 9 1/2 x 6	27 1/2 x 13	25 x 10 1/2 x 5		
FS G2409-R7	Semi-Rec. 1 1/2	24 x 9 1/2 x 6	27 1/2 x 13	26 1/8 x 11 5/8 x 5 7/8		
G2409-6R	Semi-Rec. 2 1/2	24 x 9 1/2 x 6	27 1/2 x 13	25 x 10 1/2 x 4		
FS G2409-6R	Semi-Rec. 2 1/2	24 x 9 1/2 x 6	27 1/2 x 13	26 1/8 x 11 5/8 x 4 7/8		
G2409-RM	Semi-Rec. 4 1/2	24 x 9 1/2 x 6	27 1/2 x 13	25 x 10 1/2 x 2		
FS G2409-RM	Semi-Rec. 4 1/2	24 x 9 1/2 x 6	27 1/2 x 13	26 1/8 x 11 5/8 x 2 7/8		
G2409-RA	Semi-Rec. 4	24 x 9 1/2 x 6	27 1/2 x 13	25 x 10 1/2 x 2 1/2		
FS G2409-RA	Semi-Rec. 4	24 x 9 1/2 x 6	27 1/2 x 13	26 1/8 x 11 5/8 x 3 3/8		
G2409-SM	Surface Mtd.	27 1/2 x 13 x 6	27 1/2 x 13			

# Gemini Series Fire Extinguisher Cabinets

Model Number	Trim Style and Projection	Inside Box Dimensions H x W x D	Outside Trim Dimensions H x W **	Rough Opening H x W x D	Recommended Extinguisher Capacity
G2712-R	Rec. - 5/16	27 x 12 x 8	30 1/2 x 15 1/2	28 x 13 x 8 1/4	PW2 1/2, MP20, DC20, CD10, WC-6L, HT11, HT15 1/2
G2712-RK	Semi - Rec. 1 1/4	27 x 12 x 8	30 1/2 x 15 1/2	28 x 13 x 7 1/4	
G2712-RL	Semi - Rec. 2 1/2	27 x 12 x 8	30 1/2 x 15 1/2	28 x 13 x 6	
G2712-RM	Semi - Rec. 4 1/2	27 x 12 x 8	30 1/2 x 15 1/2	28 x 13 x 4	
G2712-RA	Semi - Rec. 4	27 x 12 x 8	30 1/2 x 15 1/2	28 x 13 x 4 1/2	
G2712-SM	Surface Mtd.	27 x 12 x 8	30 1/2 x 15 1/2		

\* Inside box depth is 4 3/4" when supplied with aluminum door and trim. The AL G2409-5R has a 1 1/4" square trim.

\*\* Deduct 3/4" from H x W dimensions for cabinets with aluminum trim. This does not apply to "FS" fire-rated option.

**Note:** All recessed, trimless, and semi-recessed cabinets with 2 1/2" projecting trims or less comply with ADA wall projection guidelines. If semi-recessed cabinets with 4" projecting trims cannot be mounted with their leading edges at or below 27" above the finished floor, they must be specified with Larsen's recessed handle to comply with ADA wall projection guidelines. Semi-recessed cabinets with 4 1/2" return trims and all surface-mounted cabinets do not comply with ADA wall projection guidelines, unless they can be mounted with their leading edges at or below 27" above the finished floor.



## Cameo Series Fire Extinguisher Cabinets

Larsen's Cameo Series provides an attractive as well as a safe and practical method of housing a fire extinguisher. By projecting the extinguisher into its protruding bubble, the Cameo allows for not only installation into a shallow wall but also full, 180-degree visibility of the cabinet's contents. The manufacturer's standard bracket must be used to support the fire extinguisher inside the Cameo cabinet. The standard door and trim material is steel, and optional materials include both aluminum and stainless steel. All door frames are 1/2" thick, hollow-metal design. All units have a satin-finish pull handle with a self-adjusting roller catch; and a continuous piano hinge constructed of material which matches the door and trim.



Model Number	Trim Style and Projection	Inside Box Dimensions H x W x D	Outside Trim Dimensions H x W **	Rough Opening H x W x D	Recommended Extinguisher Capacity
C2409-R	Rec. - 5/16	24 x 9 1/2 x 3 1/2	27 1/2 x 13	25 x 10 1/2 x 4	MP2 1/2, MP5, MP5-A, DC2 1/2, DC5, MP6 MP10, DC6, DC10 HT2 1/2, HT5
FS C2409-R	Rec. - 5/16	24 x 9 1/2 x 3 1/2	27 1/2 x 13	26 1/8 x 11 5/8 x 4 5/8	
C2409-5R	Semi - Rec. 1 1/2	24 x 9 1/2 x 3 1/2	27 1/2 x 13	25 x 10 1/2 x 2 3/4	
FS C2409-5R	Semi - Rec. 1 1/2	24 x 9 1/2 x 3 1/2	27 1/2 x 13	26 1/8 x 11 5/8 x 3 7/8	
C2409-6R	Semi - Rec. 2 1/2	24 x 9 1/2 x 3 1/2	27 1/2 x 13	25 x 10 1/2 x 1 1/2	
FS C2409-6R	Semi - Rec. 2 1/2	24 x 9 1/2 x 3 1/2	27 1/2 x 13	26 1/8 x 11 5/8 x 2 5/8	
C2409-SM	Surface Mtd.	27 1/2 x 13 x 3 1/2	27 1/2 x 13		
C3216-R	Rec. 5/16	32 x 16 x 3 1/2	35 1/2 x 19 1/2	33 x 17 x 4	

\*\* Deduct 3/4" from H x W dimensions for cabinets with aluminum door and trim. This does not apply to the "FS" fire-rated option.

**Note:** "FS" models denote Larsen's "Flame-Shield" fire-rated cabinets. When specifying Larsen's "Flame-Shield" fire-rated cabinet option for the Cameo Series, refer to the dimension chart above and select from the models with an "FS" prefix.

**Note:** All recessed (R-5/16") and trimless (RT) Cameo cabinets listed above comply with all ADA wall projection guidelines. Semi-recessed and surface-mounted Cameo cabinets compliance with ADA wall projection guidelines depends on several location and installation issues.

## Occult Series Fire Extinguisher Cabinets

The Occult Series features an attractive door and concealed hinge which combine to give the cabinet a clean, trimless appearance. When the door is closed, it completely covers the cabinet's flange, which is on the outside of the wall surface. The Occult design also is exclusively available with Larsen's hose and valve cabinets.



Model Number	Inside Box Dimensions H x W x D	Outside Flange Dimensions H x W	Outside Door Dimensions H x W	Rough Opening H x W x D	Recommended Extinguisher Capacity
0-2409	24 x 9 <sup>1</sup> / <sub>2</sub> x 6	25 <sup>1</sup> / <sub>2</sub> x 11	25 <sup>3</sup> / <sub>4</sub> x 11 <sup>1</sup> / <sub>4</sub>	24 <sup>1</sup> / <sub>2</sub> x 10 x 6 <sup>1</sup> / <sub>4</sub>	MP2 <sup>1</sup> / <sub>2</sub> , MP5, MP5-A, MP6, MP10, DC2 <sup>1</sup> / <sub>2</sub> , DC5, DC6, DC10, CD5, HT2 <sup>1</sup> / <sub>2</sub> , HT5

**Note:** All Occult Series cabinets comply with ADA wall projection guidelines.

## Vista Series Fire Extinguisher Cabinets

The Vista Series has the same aesthetic and practical features as the Cameo. The fire extinguisher is projected into a protruding bubble, allowing for full 180-degree visibility and for installation into a shallow wall depth (4"). The fire extinguisher is supported by the manufacturer's standard bracket. The unique Vista bubble door eliminates the need for a door frame.



Model Number	Trim Style and Projection	Inside Box Dimensions H x W x D	Outside Door Dimensions H x W *	Rough Opening H x W x D	Recommended Extinguisher Capacity
V-2709	Rec. - 5/16	27 x 9 1/2 x 41	30 1/2 x 13	28 x 10 1/2 x 4	MP2 1/2, MP5, MP5-A MP6, MP10, DC2 1/2, DC5, DC6, DC10, HT2 1/2, HT5

\*Deduct 3/4" from H x W dimension for cabinets with aluminum trim.

**Note:** All recessed Vista cabinets comply with all ADA wall projection guidelines. Surface mounted Vista cabinets compliance with ADA wall projection guidelines depends on several location and installation issues.

# MP, DC, WC, PW, WM, CD and HT Series Fire Extinguishers

## Multi-Purpose Dry Chemical (MP)

These units contain specially fluidized and siliconized mono ammonium phosphate powder which smothers and breaks the chain reaction on **Class B** fires, fuses and insulates **Class A** fires and as a non-conductor of electricity, is effective on **Class C** fires.

## Regular Dry Chemical (DC)

These units contain specially siliconized sodium bicarbonate powder with free-flowing and non-caking additives, suitable for fires in flammable liquids, and energized electrical equipment. **NOTE:** As of July 1, 1998, all new extinguishers installed in restaurant kitchens must be **K Class** rated; the DC Series no longer is recommended for use in kitchen areas.

All multi-purpose, regular dry chemical units feature:

- Heavy-duty DOT steel cylinders
- Rugged metal valves and siphon tubes
- Replaceable molded valve stem seals
- Corrosion and impact resistant polyester/epoxy paint finish
- Pull pin-upright squeeze grip operation
- Approved to -65° F.
- Non-toxic
- Pressure gauges
- Contact factory if non-ferrous cylinders are required

## Wet Chemical (WC)

Wet Chemical units are designed specifically for kitchen grease fire hazards and meet the new **K Class** listing now required for all extinguishers installed in restaurant kitchens. They contain a special potassium acetate based, low PH agent, which leaves no chemical residue to clean up. The spray applicator wand keeps the operator at a safe distance from the fire. Larger 2½ gallon unit with identical U.L. rating is available for a limited time.

## Class A Fires

Paper, wood, cloth, etc. Where quenching by water or insulating by general purpose dry chemical is effective.

## Class B Fires

Burning liquids (gasoline, oils, cooking fats, etc.) where smothering action is required.

## Pressurized Water (PW)

This unit is ideally suited for all industrial and commercial applications, where easy to use, positive on-off operation is important. Water is used as the extinguishing agent, making it highly effective on deep-seated **Class A** fires. (Shipped empty.)

## Water Mist (WM)

This unit is designed for use wherever there is a **Class A** hazard near electrical equipment and the environment is of paramount concern. The extinguishing agent is distilled water, and the wand provides greatest operator safety. There is no risk of electrical conductivity or thermal or static shock. Ideal for use in health care, data processing, telecommunication, and clean room facilities. (Shipped empty.)

## Carbon Dioxide (CD)

These units contain liquid carbon dioxide under pressure. It is discharged as a white cloud of "snow," which effectively smothers a fire. Carbon dioxide is a clean, non-conductor of electricity for **Class B** and **C** fires. Absolutely rust-free aluminum cylinders.

## Halotron I (HT)

Halotron I is an EPA-approved clean agent which discharges as a rapidly evaporating liquid, leaving no residue. It effectively extinguishes **Class A, B** and **C** fires and is intended for use in areas formerly protected by Halon 1211.

## Class C Fires

Fire in live electrical equipment (motors, switches, appliances, etc.) where a non-conductive extinguishing agent is required.

## Class K Fires

Cooking media.

**MP, DC, HT, WC, PW, WM  
and CD Series Fire Extinguishers**

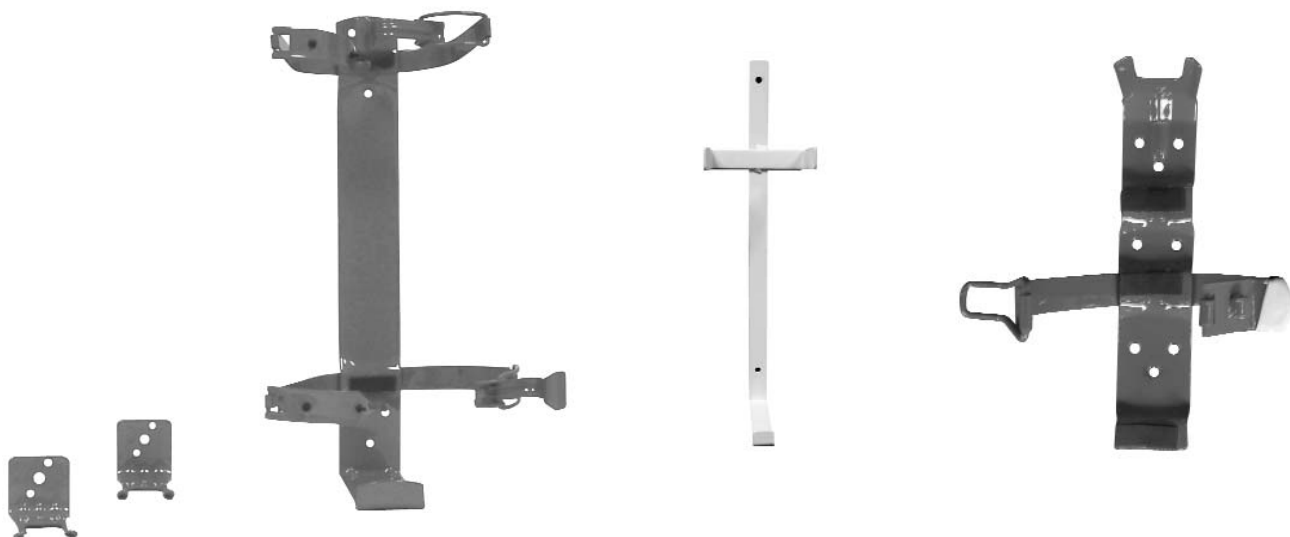


**MP, DC and HT Series**

<b>Model Number</b>	<b>Nominal Capacity</b>	<b>Shipping Weight</b>	<b>Cylinder Diameter</b>	<b>Overall Height</b>	<b>Overall Width</b>	<b>UL Rating</b>	<b>Standard Bracket*</b>	<b>Optional Bracket*</b>
MP2 <sup>1</sup> / <sub>2</sub>	2 <sup>1</sup> / <sub>2</sub> lbs.	5 <sup>1</sup> / <sub>2</sub> lbs.	3 in.	15 <sup>1</sup> / <sub>2</sub> in.	5 <sup>3</sup> / <sub>4</sub> in.	1A-10B:C	817	860
MP5	5 lbs.	9 <sup>1</sup> / <sub>4</sub> lbs.	4 <sup>1</sup> / <sub>4</sub> in.	15 <sup>1</sup> / <sub>4</sub> in.	7 <sup>1</sup> / <sub>4</sub> in.	2A-10B:C	1521	B-2, 818, 821, 860
MP5-A	5 lbs.	9 <sup>1</sup> / <sub>4</sub> lbs.	4 <sup>1</sup> / <sub>4</sub> in.	15 <sup>1</sup> / <sub>4</sub> in.	7 <sup>1</sup> / <sub>4</sub> in.	3A-40B:C	1521	821, 860
MP6	6 lbs.	12 <sup>3</sup> / <sub>4</sub> lbs.	5 in.	16 in.	7 <sup>3</sup> / <sub>4</sub> in.	3A-40B:C	5525	808, 862
MP10	10 lbs.	18 lbs.	5 in.	20 in.	7 <sup>3</sup> / <sub>4</sub> in.	4A-80B:C	5525	B-2, 846, 862
MP20	20 lbs.	38 lbs.	7 in.	23 <sup>1</sup> / <sub>4</sub> in.	10 <sup>1</sup> / <sub>4</sub> in.	20A-120B:C	1007	864
DC2 <sup>1</sup> / <sub>2</sub>	2 <sup>1</sup> / <sub>2</sub> lbs.	5 <sup>1</sup> / <sub>2</sub> lbs.	3 in.	15 <sup>1</sup> / <sub>2</sub> in.	5 <sup>3</sup> / <sub>4</sub> in.	10B:C	817	860
DC5	5 <sup>1</sup> / <sub>2</sub> lbs.	9 <sup>1</sup> / <sub>2</sub> lbs.	4 <sup>1</sup> / <sub>4</sub> in.	15 <sup>1</sup> / <sub>4</sub> in.	7 <sup>1</sup> / <sub>4</sub> in.	40B:C	1521	B-2, 818, 821, 860
DC6	6 lbs.	13 lbs.	5 in.	16 <sup>1</sup> / <sub>4</sub> in.	8 <sup>1</sup> / <sub>2</sub> in.	40B:C	1007	808, 862
DC10	10 lbs.	18 lbs.	5 in.	20 in.	7 <sup>3</sup> / <sub>4</sub> in.	60B:C	5525	B-2, 846, 862
DC20	20 lbs.	38 lbs.	7 in.	23 <sup>1</sup> / <sub>4</sub> in.	10 <sup>1</sup> / <sub>4</sub> in.	120B:C	1007	864
HT2 <sup>1</sup> / <sub>2</sub>	2 <sup>1</sup> / <sub>2</sub> lbs.	5 <sup>1</sup> / <sub>4</sub> lbs.	3 in.	14 <sup>3</sup> / <sub>4</sub> in.	5 <sup>1</sup> / <sub>2</sub> in.	2B:C	817	860
HT5	5 lbs.	9 <sup>1</sup> / <sub>2</sub> lbs.	4 <sup>1</sup> / <sub>4</sub> in.	15 <sup>1</sup> / <sub>4</sub> in.	5 <sup>3</sup> / <sub>4</sub> in.	5B:C	818	860
HT11	11 lbs.	22 <sup>1</sup> / <sub>2</sub> lbs.	6 <sup>1</sup> / <sub>4</sub> in.	20 <sup>1</sup> / <sub>2</sub> in.	9 <sup>1</sup> / <sub>4</sub> in.	1A:10B:C	14427	862
HT15 <sup>1</sup> / <sub>2</sub>	15 <sup>1</sup> / <sub>2</sub> lbs.	27 <sup>1</sup> / <sub>2</sub> lbs.	6 <sup>1</sup> / <sub>4</sub> in.	20 <sup>1</sup> / <sub>2</sub> in.	9 <sup>1</sup> / <sub>4</sub> in.	2A:10B:C	14427	862
WC-6L	6 liters	17 <sup>1</sup> / <sub>2</sub> lbs.	7 in.	25 in.	9 in.	2A:K	1007	N/A
PW2 <sup>1</sup> / <sub>2</sub>	2 <sup>1</sup> / <sub>2</sub> gal.	7 <sup>1</sup> / <sub>2</sub> lbs.	7 in.	24 <sup>1</sup> / <sub>2</sub> in.	9 in.	2A	1007	B1, 864
WM2 <sup>1</sup> / <sub>2</sub>	2 <sup>1</sup> / <sub>2</sub> gal.	9 lbs.	7 in.	28 in.	14 in.	2A:C	14319	864
CD5	5 gal.	14 lbs.	5 <sup>1</sup> / <sub>4</sub> in.	17 <sup>3</sup> / <sub>4</sub> in.	8 <sup>1</sup> / <sub>4</sub> in.	5-B:C	546	862
CD10	10 lbs.	28 <sup>1</sup> / <sub>4</sub> lbs.	7 in.	24 in.	12 in.	10-B:C	575	864
CD15	15 lbs.	37 <sup>3</sup> / <sub>4</sub> lbs.	7 in.	30 in.	12 in.	10-B:C	575	864
CD20	20 lbs.	50 <sup>3</sup> / <sub>4</sub> lbs.	8 in.	30 in.	13 in.	10-B:C	577	864

## Standard and Optional Brackets

**Note:** Standard brackets are included with all extinguishers at no additional cost. If specified, optional brackets are only available at additional cost. All the standard and optional brackets are designed to accommodate Larsen's extinguishers. While most comparably sized extinguishers usually will function with the brackets at the left, Larsen's cannot assume responsibility for variations in cylinder dimensions among various extinguisher suppliers.



## Fire Blanket Cabinets

Larsen's fire blanket cabinets are all equipped with a 62" x 80" fire blanket fabricated of a rugged blend of reprocessed wool. These fire retardant blankets meet federal specification #CS-191-53.

### FB 68-6 Series:

Fire blanket is attached to a roller and can be rapidly released by placing one's arm through the arm loop and turning into the blanket. This surface-mounted unit is constructed of cold-rolled steel with a standard finish of red baked acrylic enamel, and as an option, the cabinet can be fabricated entirely of stainless steel (model SS FB 68-6).

### FB 1016 Series:

Drop Type, surface mounted cabinet, constructed of cold-rolled steel with a red baked acrylic enamel finish. The folded blanket is always visible through the viewing knockout on the front and is quickly available by releasing the hinged bottom of the cabinet.

Model Number	Trim Style and Projection	Inside Box Dimensions H x W x D
FB68-6	Surface Mtd.	68 x 6 <sup>1</sup> / <sub>4</sub> x 4
FB1016	Surface Mtd.	10 x 16 x 8



## ESCAPE LADDERS

### PRO 15'

- 15' Ladder in Corrugated Box
- Strong, Lightweight, Easy to Use
- Attaches Quickly to Window
- Tangle-Free Design

### PRO 25'

- 25" Ladder in Corrugated Box
- Strong, Lightweight, Easy to Use
- Attaches Quickly to Window
- Tangle-Free Design

## BATTERY OPERATED SMOKE ALARMS

Kidde Fynetics battery operated smoke alarms require no wiring and include all batteries necessary for operation. Suitable for installation on walls or ceilings.

### 0914E Ionization Smoke Alarm

- Ionization Sensor
- For Use In All Rooms
- Low Battery Indicator
- Test Button

### 0915E Ionization Smoke Alarm

- Ionization Sensor
- For Use In All Rooms
- Low Battery Indicator
- Test Button

### 0916E Ionization Smoke Alarm

- Ionization Sensor
- Hush Button and Hush Cancel
- Low Battery Indicator
- For Kitchens and Hallways Near Bathrooms
- Test Button

Model	KEL - 15	KEL - 25
Part No.	466355	466430
Ladder Length (feet)	15	25
Physical Box Size		
Weight (lb./kg)	15.25/6.86	21.1/9.49
Width (in/cm)	19.5/49.53	19.5/49.53
Height (in/cm)	15.87/40.32	15.87/40.32
Depth (in/cm)	5.75/14.60	5.75/14.60
Cubic feet/meters	1.15/0.10	1.15/0.10
Master Pack (units)	2	2

### 0918E Ionization Smoke Alarm

- Ionization Sensor
- Exit Light for Halls / Stairways
- Low Battery Indicator
- Test Button

### PE9E Photoelectric Smoke Alarm

- Photoelectric Sensor
- Low Battery Indicator
- Test Button

### 900-0102-04 Smoke and Carbon Monoxide Alarm

- Ionization Sensor
- Alarm / Voice Message Warning System
- Low Battery Indicator
- Test Button

Features	0914E	0915E	0916E	0918E	PE9E	900-0102-04
Battery Powered (Batteries included)	X	X	X	X	X	X
Hush Button			X			
Exit Light				X		
Test Button	X	X	X	X	X	X
Flashing Red LED Power On Indicator	X	X	X	X	X	X
Low Battery Indicator	X	X	X	X	X	X
Piercing 85dB Alarm Horn	X	X	X	X	X	X
Ionization Sensor	X	X	X	X		X
Photoelectric Sensor					X	
Tamper Proof Locking Pin		X	X	X	X	
5-Year Limited Warranty		X	X	X	X	X

## Smoke Alarms

### INTERCONNECTABLE SMOKE ALARMS

Kidde Fyrnetics offers a full range of 120 VAC wire -in life safety products with interconnect capability to provide the most immediate and complete system available. When any one interconnected alarm is triggered by smoke or heat, all interconnected alarms within the home sound an immediate warning.

#### 1235E Ionization Smoke Alarm

- Ionization Sensor
- Alarm Memory
- Test Button
- Quick Connect Harness

#### 1275E Ionization Smoke Alarm

- Ionization Sensor
- Battery Back-Up
- Alarm Memory
- Low Battery Indicator
- Quick Connect Harness
- Also available 1275EA with 9V alkaline battery.

#### 1285E Ionization Smoke Alarm

- Ionization Sensor
- Exit Light for Halls / Stairways
- Battery Back-Up
- Alarm Memory
- Quick Connect Harness

#### PE120E Photoelectric Smoke Alarm

- Photoelectric Sensor
- Battery Back-Up
- Quick Connect Harness

### SUPPLEMENTARY LIFE SAFETY DEVICES

#### HD135F Heat Detector

- Thermal Sensor
- Battery Back-Up
- Quick Connect Harness
- Test Button

Features	1235E	1275E	1285E	PE120E	HD135F
Ionization Sensor	X	X	X		
Photoelectric Sensor				X	
120V AC Wire-in	X	X	X	X	X
Battery Back-Up (Battery Included)		X	X	X	X
Exit Light			X		
Quick Connect Harness	X	X	X	X	X
Test Button	X	X	X	X	X
Green LED "Power On" Light	X	X	X	X	X
Flashing Red LED Alarm Light	X	X	X	X	X
Flashing Green LED Alarm Memory Indicator	X	X	X		
Low Battery Indicator		X	X	X	
Piercing 85db Alarm Horn	X	X	X	X	X
Thermal Sensor					X
5 Year Limited Warranty	X	X	X	X	X

# 120V AC Operated Carbon Monoxide Alarms

Kidde Fynetics offers Nighthawk 120 V AC plug-in and non-interconnectable A.C. carbon monoxide alarms. Battery back-up models provide continuous protection, even during power outages.

## 900-0058

### 900-0033 Carbon Monoxide Alarm

- Basic Unit
- Permanent Electro-chemical Sensor
- Updates Every 15 second
- Test / Reset Button
- 5 Year Warranty

## 900-0014

## 900-0026

### 900-0056 Carbon Monoxide Alarm

- All the Features of Basic Unit Plus:
- Digital Readout
- Peak Level Memory
- 5 Year Warranty

Features	900-0058	900-0033	900-0014	900-0026	900-0056
Wire-In 120V AC		X		X	
Direct Plug-In 120V AC	X				X
Plug-In w/8' Cord 120V AC			X		
Test / Reset Button	X	X	X	X	X
Permanent Sensor	X	X	X	X	X
Digital Readout			X	X	X
Peak Level Memory			X	X	X
Green LED "Power ON" Light	X	X			
Blinking Red DOT Power On Indicator			X	X	X
Piercing 85dB Alarm Horn	X	X	X	X	X
5 Year Limited Warranty	X	X	X	X	X

# Battery Operated Carbon Monoxide Alarms

Nighthawk and KIDDE battery operated carbon monoxide alarms require no wiring and include all batteries necessary for operation. Suitable for installation on walls or ceilings.

### 9C05-04 Carbon Monoxide Alarm

- Battery Operated
- Permanent Sensor
- Test / Reset Button
- Updates every 15 seconds

### 900-0089 Carbon Monoxide Alarm

- Battery Operated
- Permanent Sensor
- Digital Display
- Peak Level Memory
- Updates every 15 seconds

### 900-0102-04 Smoke and Carbon Monoxide Alarm

- 2-in-1 Alarm
- Ionization Sensor
- Alarm / Voice Message Warning System
- Low Battery Indicator
- Test Button

Features	9C05	900-0089	900-0102-04
Battery Operated	X	X	X
Permanent Sensor	X	X	X
Flashing Green LED Power Indicator	X	X	X
Digital Readout		X	
Peak Level Memory		X	
Steady On Red LED Alarm Light	X	X	
Piercing 85dB Alarm Horn	X	X	X
Front Loading Battery Door	X		
5 Year Warranty	X	X	X



### STI STOPPER II

Stopper II helps prevent false fire alarms without restricting legitimate alarms. It consists of a clear, tamperproof polycarbonate shield and frame that fits over manual pull stations. When lifted to gain access to the actual alarm, it sounds a piercing warning horn. Immediate attention is called to the area and a prankster will either run or be caught.

Stopper II is ideal for colleges, schools, hospitals, nursing homes, training centers, correctional facilities, hotels/motels, stores, libraries, public buildings of almost every kind where the threat of false fire alarms is great. Stronger than steel pound for pound, its almost unbreakable polycarbonate construction makes it suitable for abusive environments such as warehouses, schools, correctional facilities and all public buildings. Stopper II fits virtually all manual pull stations, accommodating units up to 5 1/2" wide x 7" high x 2 3/4" deep. Conduit spacers are available for deeper units.

### STI MINI STOPPER II

This smaller cousin of the famed Stopper II is designed to protect smaller size manual pull stations or push buttons against vandalism and false fire alarms. As the original Stopper II, it consists of a tamperproof, clear polycarbonate shield and frame that fits easily over units up to 4 1/8" wide x 4 3/4" high x 1 1/2" deep (5 1/2" high without horn). When lifted to gain access to the actual alarm, it sounds a piercing 120 dB warning horn. Immediate attention is drawn to the pull station or push button and a prankster will either run or be caught. Legitimate alarms can still be pulled. Available with or without warning horn.

### STI Mini Theft Stopper

Here is an ingenious and inexpensive way to protect fire extinguishers and a wide range of other fire fighting equipment from theft. The Mini Theft Stopper is compact, highly effective, extremely versatile and does not interfere with fire fighting in any way. Its simplicity of design contributes greatly to its high degree of reliability.

### For Cabinet Mounted Equipment, etc.

With its reed switch and magnet assembly, Mini Theft Stopper has a variety of applications. It can be used on a fire extinguisher cabinet door or on cabinets housing fire hoses, sprinkler shutoff valves and other fire protection equipment. In a similar way, it can be used for gun cabinets, medicine cabinets or any door you wish to protect.

### For Freestanding Equipment, etc.

Mini Theft Stopper comes with a special clip that can be used to protect a fire extinguisher standing alone or any other freestanding equipment you wish to protect, such as office gear or computer modules. This model can also be mounted on a fire extinguisher pull pin. The self-contained warning horn sounds when this pin has been pulled.

### STI Fire Extinguisher Theft Stopper

Fed up with replacing or recharging misused fire extinguishers? Here is an effective way to stop such theft and vandalism. This Stopper uses a time-tested, steel cable operated switch mechanism. It allows the extinguisher to be used for fire fighting at any time, but sounds a piercing alarm when the extinguisher is moved from its normal position. Permitted by fire marshals, it's easy to install and fits all fire extinguisher models. Its highly visible "stop sign" design is a deterrent itself.

### STI Exit Stopper

Here is a highly effective way to alert you to any unauthorized exits or entries through any emergency exit door. By doing so, it can serve as an inexpensive security device and help stop theft as well. If the protected door is opened, the electronic Exit Stopper emits an ear piercing alarm for 30 seconds, three minutes or continuously (as preset by the user). A key operated override will silence the alarm and allow authorized exits. Exit Stopper is fitted with a long life alkaline battery. It is available in red or green for almost any type of door, mounting or installation, including remote placement of the alarm.

# Notes

---